



The SolarPath HIGHLIGHT SPWSPDL™ is the most advanced and sophisticated solar light pole available on the market. The solar light pole is completely off-grid and works autonomously, using sustainable solar power. This means there is no need for expensive cabling and invasive trenching, which results in fast installation, easy operation and a low total cost of ownership. Solar energy generated during the day is stored in high-quality lithium batteries, which are long-lasting and require minimum maintenance. The highly efficient LED-luminaire provides powerful lighting at night.

Advantage

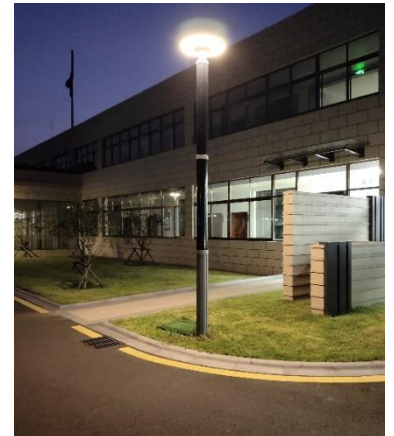
- Flexible Monocrystalline silicon solar panel
- Maintenance free.
- High LED performance.
- Controller: Optically control. Time control, anti-over-discharge and short-circuit resistant.
- Material: Aluminum alloy, steel pole coated with electrostatic spray, anti-salted, anti- acid, weather and rust resistant.
- IP65

Uses and Applications Guide

Streets lighting	●
Parking lots	●
Walking/bike path	●
Branch roads	●
Residential roads	●
Public parks	●

Technical Specifications

Solar Module Parameters	Type	Flexible Monocrystalline Silicon
	Power	80W
Solar Charge Controller Parameters	Type	MPPT
	Battery type and parameters	Lithium (NMC) 40AH
LED Light Parameters	Light Source Power	30W
	Brightness	Up to 2,454 lm
	CCT (Correlated Color Temperature)	3,000–6,000K
Operation profile	Dusk to dawn (dim per to solar radiation)	
Operation Temperature	-4°F–131°F	
Pole Height	Up to 19 ft	



Ordering guide: Example: SPWSPDL- A-80W-30W-30K-40AH-13-GR

Model	Solar panel qty.	Solar panel	LED Power	Color Temperature	Battery capacity	Pole height	Body color
SPWSPDL	A – 1 panel B – 2 panels	80W	30W	30K	40AH	13ft	GR-Grey *other colors available upon request
				40K		15ft	
				50K		17ft	
				60K		19ft	



*Up on request