

Pedestrian Crosswalk LED Bollard



SP-PCLB™ has been developed thinking about distracted walkers. The light on the top of the bollard is at the angle of view of a pedestrian who is looking at a cellphone. Connected with the pedestrian crossing traffic lights, the LED on top of the bollard changes from red to green – according to the pedestrian crossing traffic lights -, alerting pedestrians if it is safe to cross the street or not.

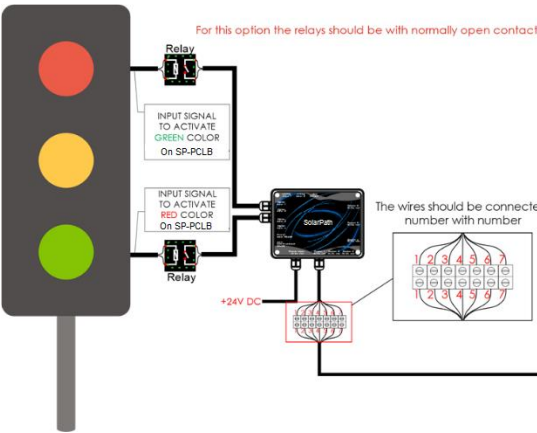


Key Feature

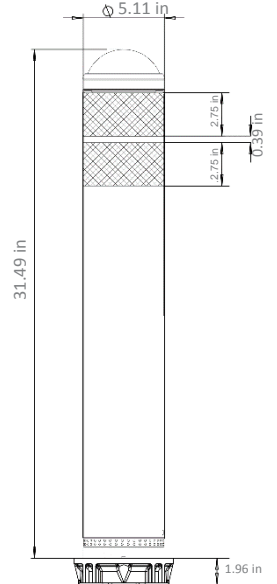
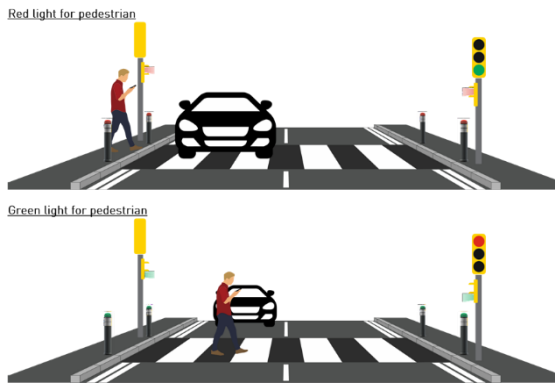
- Flexible bollard with memory effect and impact resistance
- Ideal for installation in entries of pedestrian crosswalk with traffic lights
- Specially developed to alert distracted walkers
- UV protection for greater durability
- 3M reflective tape with high reflectivity for greater visibility at night
- Possibility to add ribbons with glass reflector elements on bottom
- Over temperature protection
- Smart brightness management
- Easy installation and replacement

Technical Specifications

Power Supply	24V DC
Current Consumption	Top LEDs: Red 139 mA; Green: 200mA Ring LEDs: Red: 200mA; Green: 200mA
LED's Type	Ring: 5mm / Top: Power LEDs
LED's Color	Red and Green
Reflective Tape	3M Reflective Tape
Reflective Tape Colors	White (Other colors available by request)
Main Body/ Base Material	PU and Aluminum
Main body Base color	Grey
Glass Reflector Ribbons Colors	Black with white crystals
Working Temperature	-13°F-185°F



TYPICAL INSTALLATION ON CROSSWALK



Legal Clarification: All technical information and/or products listings and/or technical support, and/or any kind of graphics, illustrations and/or instructions and/or the names, trade names, trademarks, trade symbols, service marks, logos, icons and trade dress of SolarPath Inc. or in connection to SolarPath Inc. or any of its selling products, contained herein is in the exclusive ownership of SolarPath Inc. and may not be altered and/or used in any manner including but not limited to copy of some or all of the said material by users and/or viewers or any third party for that matter of this document and the website to which it is linked without the express prior written permission of SolarPath Inc. Furthermore, redistribution or any kind of commercial use or alteration or any kind of use other than downloading presented information in some or all contents of downloadable documents, and/or downloadable contents, is strictly prohibited without express written prior permission. All information set out herein is subject to changes as may occur from time to time. SolarPath Inc. is not responsible for, and cannot guarantee and shall not be held liable for any information or the accuracy of such in websites that it does not manage

